

# Daily Weather Update

## Coastal Area Around The Sri Lanka

Information Fusion Center-Colombo

Ampericce

130j-2019

100

100

100

100

100

100

100

100

100

100

100

100

100

100

100

100

100

100

100

100

100

100

100

100

100

100

100

100

100

100

100

100

100

100

100

100

08-16  
APRIL

100

100

100

100

100

100

100

100

100

100

100

100

100

100

ANLS

100

100

100

100

100

100

100

100

100

100

100

100

100

100

100

100

100

100

Kingle

100

100

100

100

100

100

100

100

100

Raun

100

100

100

100

100

100

100

100

100

Deleale

100

100

100

100

100

100

100

100

100

100

100

100

100

100

100

100

100

100

100

100

100

100

100

100

100

100

100

100

100

100

100

100

100

100

100

100

100

100

100

100

100

100

100

100

100

100

100

100

100

100

100

Armenthile

100

100

100

100

100

100

100

100

100

100

100

100

100

100

100

100

100

100



Information Fusion Center  
Colombo  
Sri Lanka

Date 2026.05.09

**FORMATION FUSION CENTRE**

# **WEATHER FORECAST FOR SEA AREAS AROUND THE ISLAND DURING NEXT 24 HOURS**

**Issued at 05.30 a.m. on 09 May 2026**



**DEPARTMENT OF METEOROLOGY  
SRI LANKA**

**COLombo - SRI LANKA**

# CONDITION OF THE RAIN

Showers or thundershowers will occur at times in the sea areas around the island.

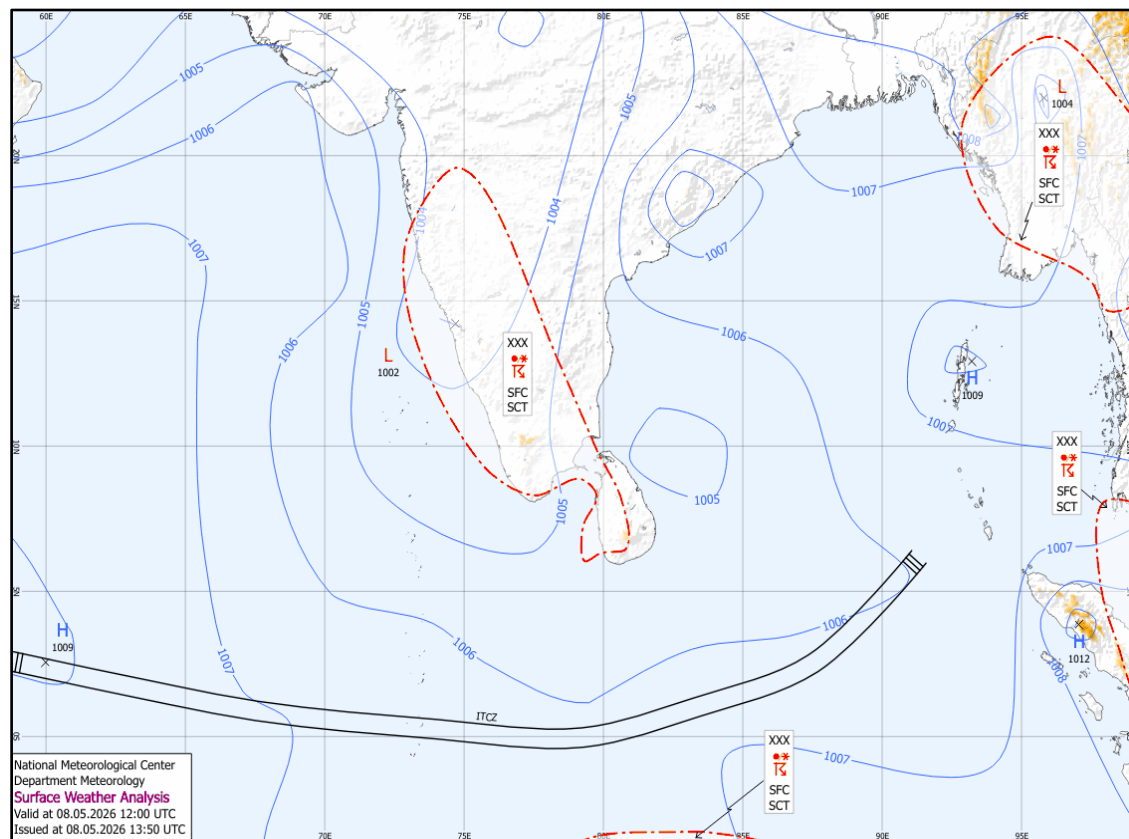
# WINDS

Winds will be South-westerly or variable in direction. Wind speed will be (25-35) kmph.

# STATE OF SEA

The sea areas around the island can be Slight to moderate.  
Temporarily strong gusty winds and very rough seas can be expected during thundershowers.

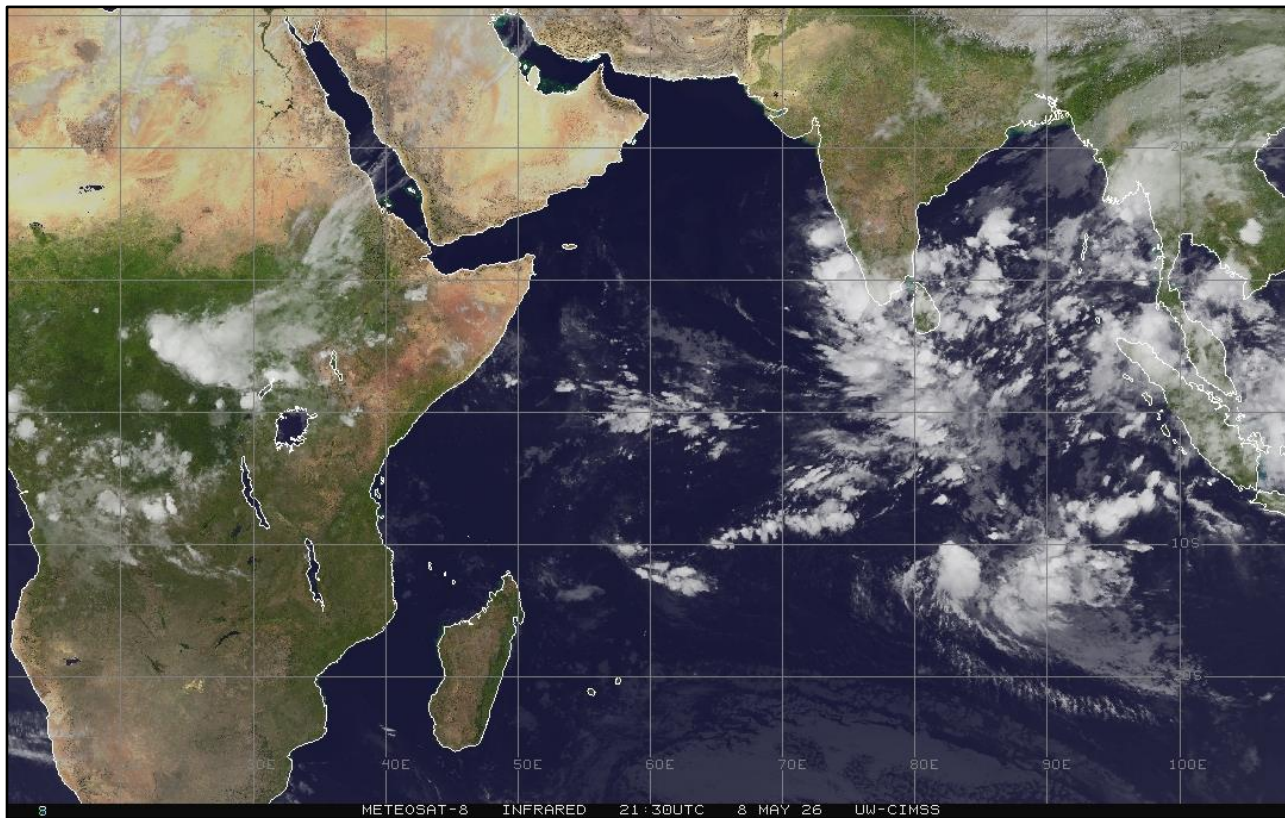
# SURFACE ANALYSIS CHART



This analysis charts show the surface pressure pattern over Sri Lanka and the surrounding area. They display isobars (lines of equal pressure) and indicate areas of high (H) and low pressure (L) along with their central pressure value. Isobars are represented by solid blue lines, spaced every 1 hPa. High pressure is usually associated with mainly dry, settled weather with light winds, while low pressure is normally associated with unsettled weather, which is often wet and windy. The lower the pressure, generally the stronger the winds and the heavier the rain.

The map shows Coordinated Universal Time (UTC) and the local time is UTC+5.30.

# SATELLITE IMAGE



09-May-26

IFC -Colombo



Information Fusion Center  
Colombo  
Sri Lanka

**THANK YOU**

The Officer Incharge  
Information Fusion Centre - Colombo  
Naval Headquarters, Colombo, Sri Lanka  
+94 11 719 480 6  
+94 74 120 4829  
[ifc@navy.lk](mailto:ifc@navy.lk)  
[ifc.cbo@gmail.com](mailto:ifc.cbo@gmail.com)